

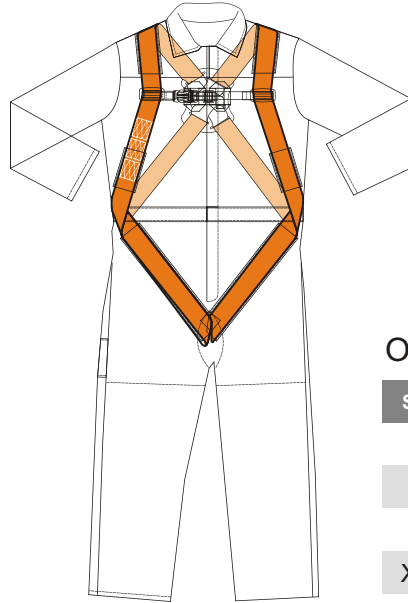
Protective overalls with safety harness

OVERALLS KB 020 EN 361 

Comfortable overalls with safety harness inside

Construction and design

Dorsal attaching point up to standard EN 361:2002



Overalls sizes: M, L, XL, XXL

SIZE	HEIGHT	CHEST MEASUREMENT	WAIST MEASUREMENT
M	170/176	96-100	80-84
L	176/182	104-108	88-92
XL	182/188	108-112	92-96
XXL	188/194	116-120	100-104

Safety harness | EN 361



Fabric and performance

Standard fabric / color

Polyester 65 % Cotton 35%
by KLOPMAN



NEW EMPIRE RED
WEIGHT 210 g/m²



BOTTLE GREEN
WEIGHT 210 g/m²



COMBO BLUE
WEIGHT 210 g/m²



BLACK
WEIGHT 210 g/m²

High Visible colors

Polyester 85 % Cotton 15%
Luminex H.V. by KLOPMAN



Luminex
H.V. Orange



Luminex
H.V. Yellow

Conforming to: EN 471:2008

Flame Resistance and Anti-static fabric

Viscose FR, modified acrylic type F
XISPAL by LENARD



Red
WEIGHT 320 g/m²



Royal Blue
WEIGHT 320 g/m²



Green
WEIGHT 320 g/m²



Orange
WEIGHT 320 g/m²



Grey 80
WEIGHT 320 g/m²



Navy
WEIGHT 320 g/m²

EN 531 Protection for clothes against fire and heat
EN 366 Radiating Heat: Comply with C1 and C2
EN 367 Convective Heat: Comply with B1 and B2
EN 532 Limited flame speed: Comply with A
EN V50354 Protection against electric arc:
Comply with TYPE 1,4 kA
EN373 Protection against extensive
splashing from molten iron and aluminium
EN 348 Protection against light splashing from molten metals
EN 1149 Anti-static Regulations

Flame Resistance, Anti-static fabric and High Visible standards



HV Yellow
WEIGHT 270 g/m²

Conforming to: EN 471:2008

