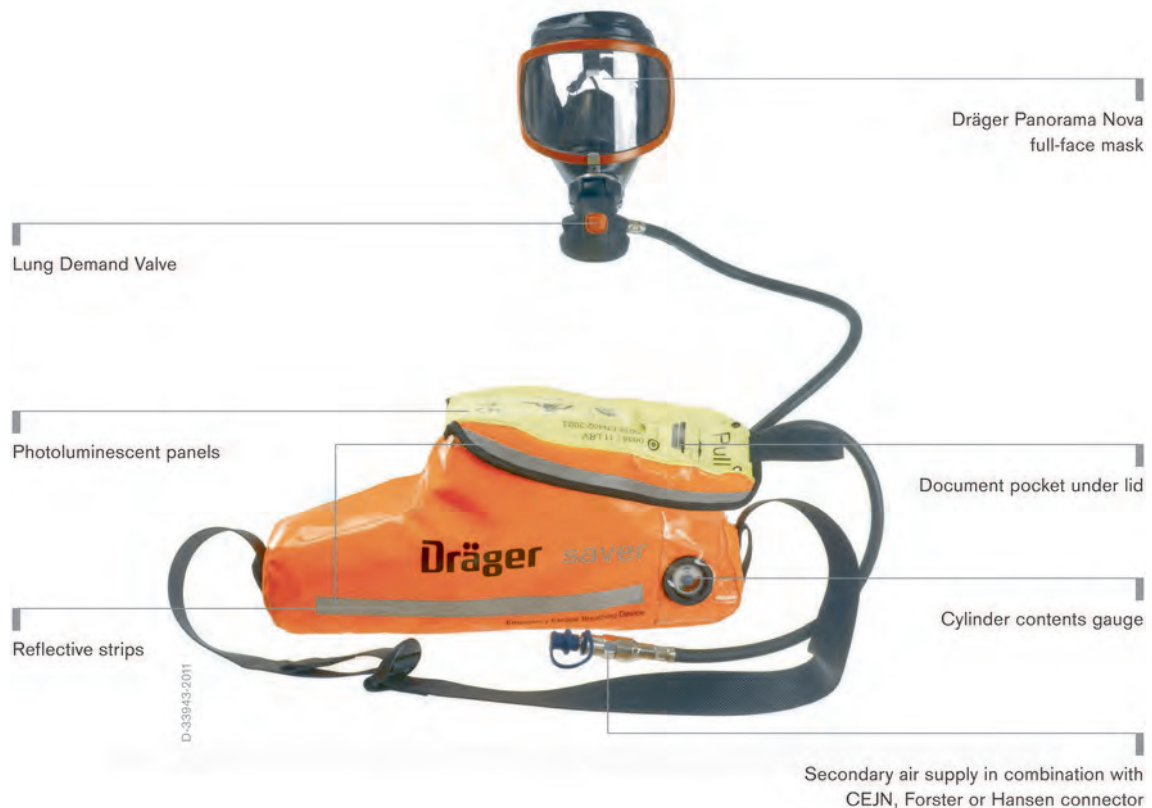


## Dräger Saver PP Compressed Air Escape

The Saver PP positive pressure Emergency Escape Breathing Apparatus allows safe, effective and uncomplicated escape from hazardous environments, even if H<sub>2</sub>S is present. Simple to put on and featuring automatic operation, this positive-pressure breathing device features an integrated full-face mask and can be used in conjunction with other safety equipment such as ear protectors or helmets.



## Benefits

---

### When time is of the essence

In emergency situations, conditions can deteriorate rapidly. The air is suddenly filled with smoke or toxic fumes and rapid escape is the only available option. The Dräger Saver PP was designed for use by trained personnel. When opened, the Dräger Saver PP is automatically activated and begins feeding a continuous supply of compressed air. The Saver PP gives the wearer the precious additional time needed to exit the area safely.

---

### Highly visible, even under adverse conditions

Available with either a soft bag or hard case, the Saver PP can be easily wall-mounted in strategic locations in potentially hazardous areas. Both black anti-static cases or bright orange bags feature photoluminescent panels and reflective stripes for enhanced visibility, even under low lighting conditions. The Saver PP is compact and lightweight and can be worn either across the chest or over the shoulder. Made from highly resistant materials, it is washable, flame retardant and allows water to drain freely.

---

### Up to 15 minutes of lifesaving air

The Dräger Saver PP utilizes a simple, fail-safe reducer system with excellent flow characteristics. It can be equipped with cylinders which can hold either a 10 or 15 minute supply of air. The unit can easily be reset following a false alarm. Cylinders can be refilled without the need for special tools.

---

### Panorama Nova full-face mask

The Panorama Nova full-face mask which comes with the Saver PP is another highquality product manufactured by Dräger. This reliable full-face mask features low exhalation resistance, provides excellent peripheral vision and is self-defogging. The elastic head harness is fast to put on in an emergency and holds the mask securely in place, even under strenuous conditions. The mask can be worn together with ear protectors and helmets.

---

### Integrated hose for connection to external air supplies

The new Dräger PP now features an integrated air hose for connection to external mid-pressure air supplies, commonly found in muster stations and in emergency assembly areas. This feature provides the user with potentially lifesaving protection in prolonged escape situations. Hose attachment and detachment are quick, safe and easy. Available connections are CEJN as standard and Forster or Hansen optional.

---

### Low-maintenance, low cost protection

Unless otherwise specified by local regulations, the Dräger Saver PP should require little to no service or maintenance for the first 10 years. A transparent window on both the soft bag and hard case lets you check the cylinder pressure gauge easily without unpacking the unit. Checks should be performed at regular intervals. You can then rely on the Dräger Saver PP to be there for you when you need it.

## Benefits

---

### Conforms to relevant standards and norms

The Dräger Saver PP complies with EN402:2003, Lloyd's Register Certificate of Fire Approval and Lloyd's Register Certificate of Type Approval. It also complies with SOLAS Chapter II-2, the Marine Equipment Directive, the Pressure Equipment Directive and ISO 23269-1:2008. Hard case and anti-static soft bag versions are also suitable for use in explosive atmospheres (zone 0).

---

### High protection against H<sub>2</sub>S

The Saver PP H<sub>2</sub>S is specifically developed to protect in atmospheres with potentially high levels of H<sub>2</sub>S. As one of the most sensitive parts of the system, the LDV diaphragm has been designed to withstand the highest concentrations of H<sub>2</sub>S seen in Oil & Gas applications across the world.

The Saver PP H<sub>2</sub>S has tested by a third party test house using a realistic simulation gas with properties and behaviour of H<sub>2</sub>S to allow representative testing, to prove simulated work protection factors of a minimum 90,000. This confirms the suitability to safely and reliably protect workers escaping from areas that are contaminated up to 450,000 ppm H<sub>2</sub>S without exceeding the STEL<sup>1</sup> of 5 ppm<sup>2</sup>.

Optionally, a carbon composite cylinder offers a lighter weight alternative for greater working flexibility and meet a range of international standards in different industries across the world.

<sup>1</sup> short term exposure limit

<sup>2</sup> Please consider your local regulations.

## System Components



D-13625-2010

### Dräger Panorama Nova®

The respiratory mask Panorama Nova® meets the highest standards of protection, sealing and quality. For decades proven worldwide, the full face mask represents absolute reliability in the protection of the respiratory tract and eyes.

## Accessories



D-45837-2015

### Single unit storage box



ST-3960-2005

### Storage cabinets

## Accessories



ST-3985-2005

---

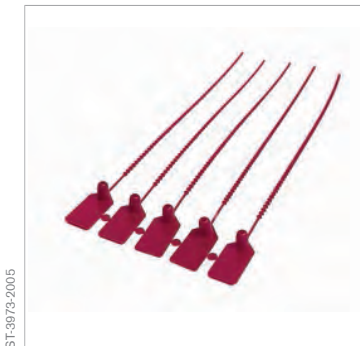
### Safety Wash



ST-3986-2005

---

### Dräger Saver Waistbelt



ST-3973-2005

---

### Security tab



D-964-2016

---

### Dräger Quaestor 5000

All static and dynamic tests of the Dräger Quaestor 5000 take place semi-automatically as a sophisticated combination of personal handling and automated control during the test sequence. The newly developed software supports the user with intuitive user guidance.

## Accessories



D-963-2016

### Dräger Quaestor 7000

All static and dynamic tests of the Dräger Quaestor 7000 are carried out fully automatically. Controlled by the newly developed software, each test is carried out intuitively. For the user this guarantees high efficiency through comfort and speed.

## Related Products



D-35109-2011

### Dräger Oxy® 3000/6000

Robust and always under control: the oxygen self-rescuers Dräger Oxy® 3000 and 6000 are designed to handle the harshest conditions. Their new product concept reliably protects the internal functional unit against damage. The Safety Eye provides an additional level of security: the status window allows the user to assess whether the device is operational within seconds.



D-33944-2011

### Dräger Saver CF

The Dräger Saver CF constant flow Emergency Escape Breathing Apparatus allows safe, effective and uncomplicated escape from hazardous environments. Simple to put on and featuring automatic operation, this hood-based, constant flow breathing device can be used with minimal training.



## Ordering Information

Wall bracket (for hard case versions)	33 60 516
<b>Safety Wash</b>	<b>Ordering no.</b>
- 1 litre dispenser	33 80 164
- 1 litre refill	33 80 165
- 5 litre dispenser	33 80 166
- 5 litre refill	33 80 167

Not all products, features, or services are for sale in all countries.  
Mentioned Trademarks are only registered in certain countries and not necessarily in the country in which this material is released. Go to [www.draeger.com/trademarks](http://www.draeger.com/trademarks) to find the current status.

**CORPORATE HEADQUARTERS**  
Drägerwerk AG & Co. KGaA  
Moislinger Allee 53–55  
23558 Lübeck, Germany  
[www.draeger.com](http://www.draeger.com)

**REGION DACH**  
Dräger Safety AG & Co. KGaA  
Revalstraße 1  
23560 Lübeck, Germany  
Tel +49 451 882 0  
Fax +49 451 882 2080  
[info@draeger.com](mailto:info@draeger.com)

**REGION EUROPE**  
Dräger Safety AG & Co. KGaA  
Revalstraße 1  
23560 Lübeck, Germany  
Tel +49 451 882 0  
Fax +49 451 882 2080  
[info@draeger.com](mailto:info@draeger.com)

**REGION MIDDLE EAST, AFRICA**  
Dräger Safety AG & Co. KGaA  
Branch Office  
P.O. Box 505108  
Dubai, United Arab Emirates  
Tel +971 4 4294 600  
Fax +971 4 4294 699  
[contactuae@draeger.com](mailto:contactuae@draeger.com)

**REGION ASIA PACIFIC**  
Dräger Safety Asia Pte Ltd  
25 International Business Park  
#04-20/21 German Centre  
Singapore 609916  
Tel +65 6308 9400  
Fax +65 6308 9401  
[asia.pacific@draeger.com](mailto:asia.pacific@draeger.com)

**REGION CENTRAL  
AND SOUTH AMERICA**  
Dräger Panama S. de R.L.  
Complejo Business Park,  
V tower, 10th floor  
Panama City  
Tel +507 377 9100  
Fax +507 377 9130  
[contactcsa@draeger.com](mailto:contactcsa@draeger.com)

Locate your Regional Sales  
Representative at:  
[www.draeger.com/contact](http://www.draeger.com/contact)

